

SENSOR CONNECT™

Wireless Lighting Controls

QUICK START GUIDE



About RCA Sensor Connect™

RCA SENSOR CONNECT 2 is a stand-alone wireless lighting system that is optimized for non-residential spaces such as offices, schools, factories, and hospitals. The RCA SENSOR CONNECT APP makes it easy to create lighting groups in the building's space to optimize energy savings and to help facility managers easily maintain lighting groups. It can create more than 10,000 independent lighting groups in a space without a network management device, and can easily split or merge lighting groups.

To help end-user's energy requirements, It can easily set up and operate the lights, sensors, switches, and schedulers within a lighting group, and redesign the groups. Create a commissioning plan by designing a lighting group and easily register the ID of the fixtures in advance by scanning the QR code from the fixture or barcode on the packaging. Just click on the commissioning button once at the site and SENSOR CONNECT APP will commission all fixtures into your lighting plan.

Topics Covered In This Guide

- 1** Items Needed to Start page 2
- 2** Creating a Building page 2
- 3** Adding a Floor page 3
- 4** Adding a Room (Location) page 3
- 5** Setting a Profile page 3
- 6** Adding Lights/Switches - OFFLINE page 4
- 7** Adding Lights/Switches - ONLINE page 5-6

Initial Setup
(Offline)

Adding
Lights/Switches

CONTACT SUPPORT



Toll Free Phone
1-800-722-2161 opt. 1
Tech support answered by humans



Email
support@rcaled.com
Tech support answered by humans



Corporate HQ
5935 W. 84th Street, Suite A
Indianapolis, IN 46278

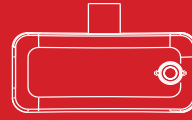


Items needed to start.



An Android Device

An Android phone or tablet, with version 8 or higher to install Sensor Connect App on



Zigbee/VLC USB Module

This device is used to communicate with RCA Lights. Part no. **RCA-VLC-USB**



Sensor Connect app

To download the app manually, search "Sensor Connect" in google play store

Sensor Connect App - First Time Setup

- 1 Insert the USB Zigbee Programming Module into the USB port. (USB A to C adapter may be required). Allow the module to access UART bridge controller.

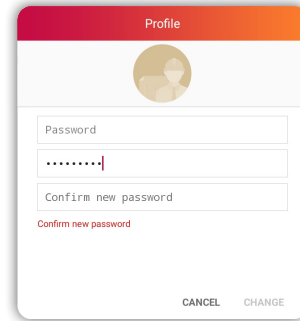
Android Phone or Tablet

USB A to C adapter
(Only required if Android device does not have a USB A port)

Zigbee/VLC USB Module



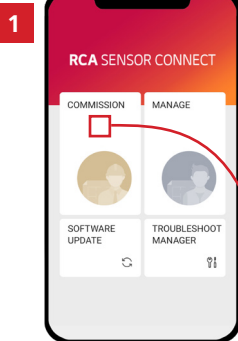
- 2 Open the Sensor Connect 2 application and insert a password in the 2nd and 3rd box. Password needs to be 8 characters or more and to include an upper and lowercase letter, a number and special character (@#\$%^+=!) with no spaces, such as "P@ssword1!". The app will restart and insert the saved password.



Creating a Building

Offline Mode

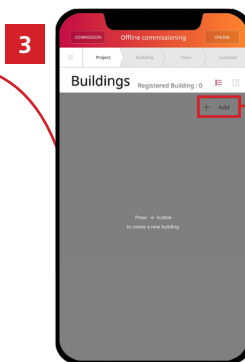
The first step in setting up your site is creating a building in offline mode, after which you can add floors and rooms.



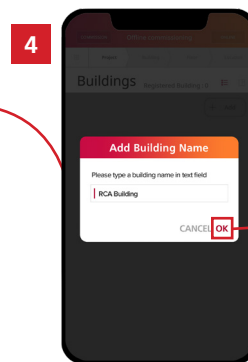
From the Sensor Connect home screen, tap "COMMISSION"



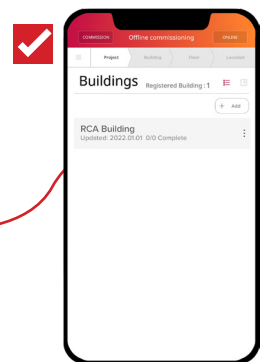
Select "Offline commissioning"



Under "Buildings" - tap "Add"



Name the building and tap "OK"



Your list of buildings appears on this screen, to add a new building, press the '+ Add' button.

Adding a Floor Offline Mode

After creating your building, the next step is adding floors to your building plan. Once a floor is created, rooms can be added to each floor.



1 Tap on the building name to add a floor.

2 The app will ask to set a profile. This may be skipped and edited later. (If skipping, proceed to step 4)

3 Select the profile most relevant. This can be changed later for each room/location.

4 Name the floor. Example: "First Floor"

5 Repeat this process to add multiple floors. Additional floors may be added later.

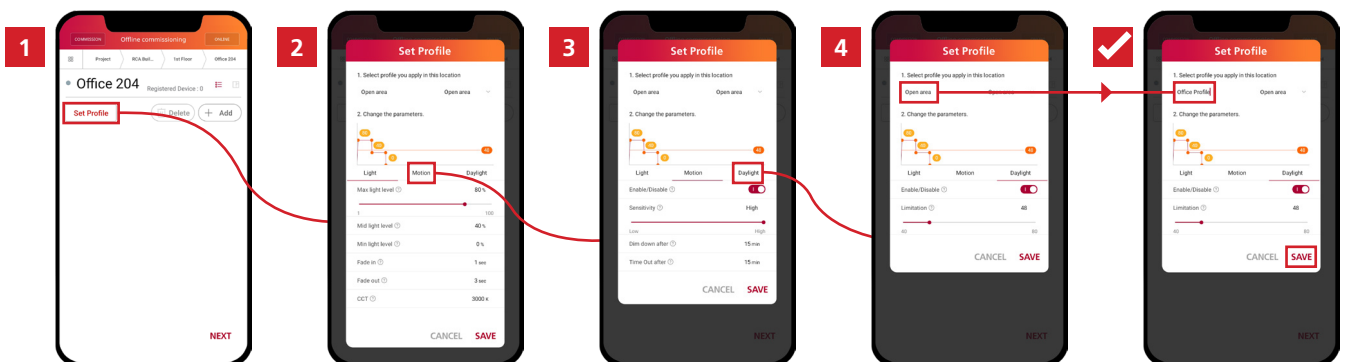
Adding a Room (Location) Offline Mode

Once you have created a floor, adding a room (know as a location in Sensor Connect) is easy. Follow these steps.

- 1 Select your floor.
- 2 Press the **+ Add** button.
- 3 Name the location. (Such as Corridor, Office 1, etc.)
- 4 Press the **OK** button to save.

Setting a Profile Offline Mode

Profiles contain light settings like brightness, timing, CCT, motion detection and daylight harvesting and can be assigned to rooms (locations).



1 Go to a specific room (location) and tap "Set Profile"

2 All the light settings including the color (CCT) may be adjusted here.

3 Motion can be enabled/disabled. Sensitivity and timing can be adjusted.

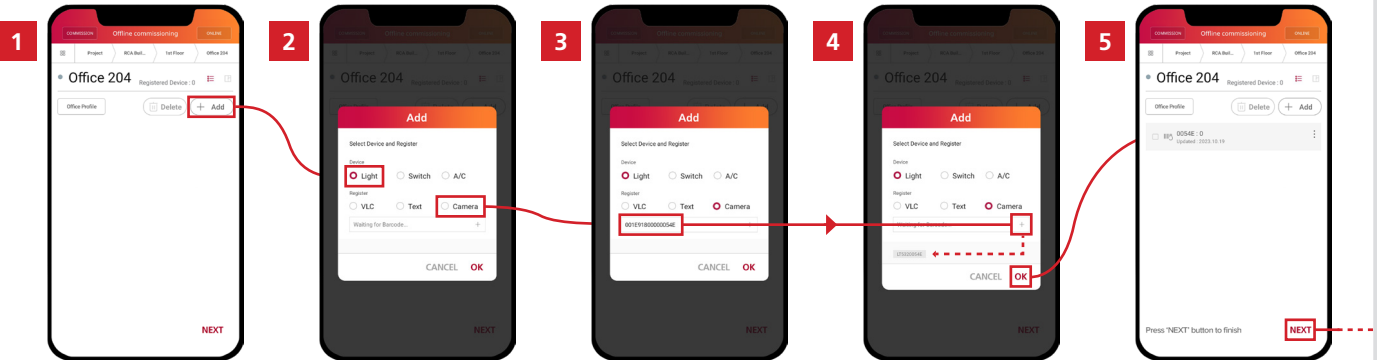
4 Daylight may be enabled/disabled with the minimum light setting to which it will go.

5 If any profile setting has been changed, **it must be renamed** (top LHS corner) and saved.

Adding Lights/Switches

Offline Mode

Lights/Switches can be added in offline mode at any time, even when they are not installed or powered.



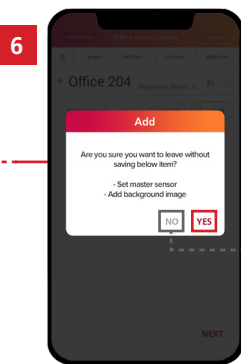
To add a device such as a light or switch, go to the location in Sensor Connect and tap “Add”

Select the device type and how it’s to be registered.

For example, if you choose “Camera” to scan a QR or bar code, the device will be added to the text box.

When the scan is completed, tap plus “+” to add the light or switch.

This screen shows all the devices added as bar codes. When done tap “NEXT”



The master should be set when on site in the “Online mode” and background image may be added now or later.

Optional

Add a background image or arrange lights in grid view. Tap “NO” in step 6 to proceed.

To add a background image, tap on the map view in the top RHS corner.

If you have an image/plan of the area you can upload it now or tap “Skip” to load a grid view.

In this view, fixtures can be placed and grouped as needed. For further details refer to the Sensor Connect Manual.

NOTE: Devices added in offline mode will be programmed during online commissioning as “registered devices” (see page 5, step 7)



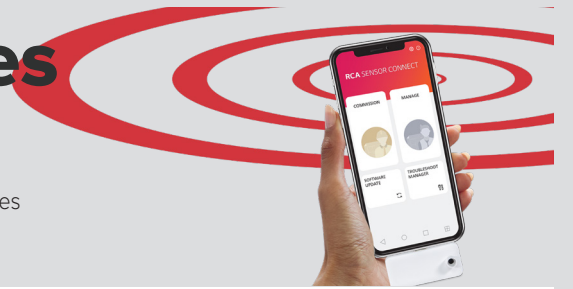
End Of Offline Commissioning

Continue to “online mode” instructions to add lights via wireless detection of installed and powered lights.

Adding Lights/Switches

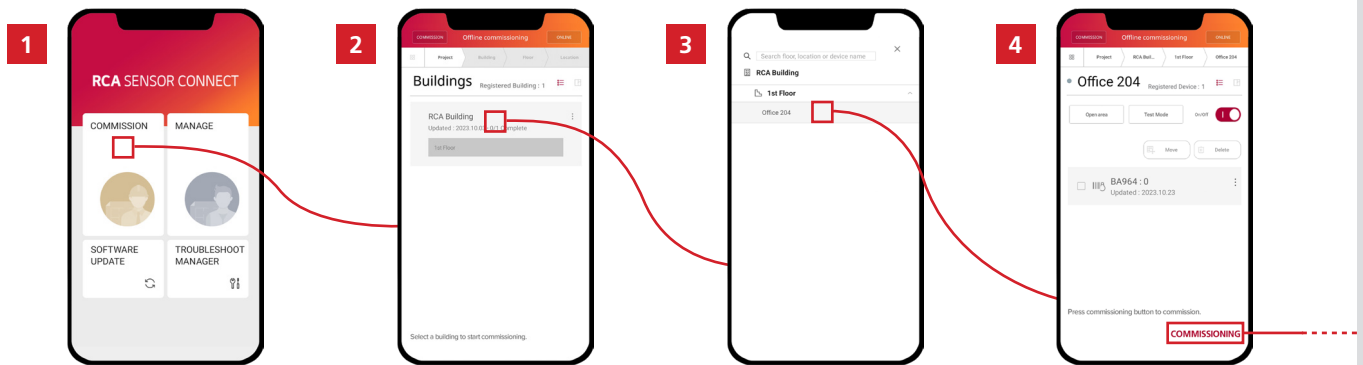
Online Mode

Online commissioning allows for the detection/addition of lights, assignment of profiles and designation of a master device using Zigbee wireless technology.



When on-site and in an area that needs to be commissioned:

Be sure to have created a building, added a floor and added a room (location) before proceeding to online commissioning. You will need the Zigbee/VLC USB Module and have it connected as described in the "Items Needed To Start" section of this guide before proceeding.

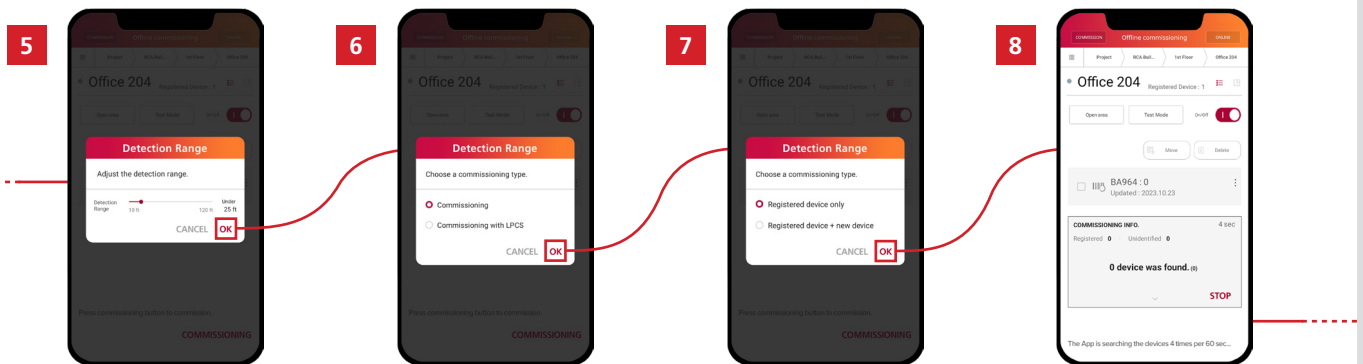


1 From the home screen, select "Commissioning."

2 Tap "Online Commissioning" and select the building.

3 Select the Location/Area to be commissioned.

4 Tap on "Commissioning in the bottom RHS corner.



5 Select the shortest range appropriate so as to not find devices that don't belong, then "OK."

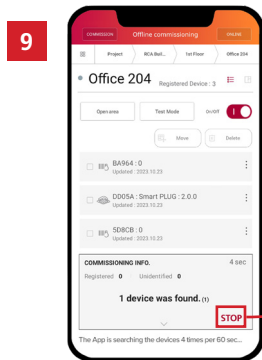
6 Select commissioning and then "OK."

7 Select "Registered device only" if all are pre-loaded or select "Registered device + new device" if not.

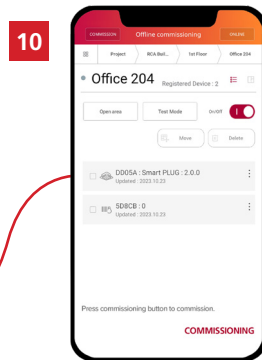
8 The system scans for 15 seconds four times.

Continued on next page

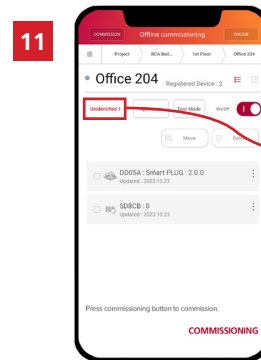
Adding Lights/Switches - Online Mode (Continued)



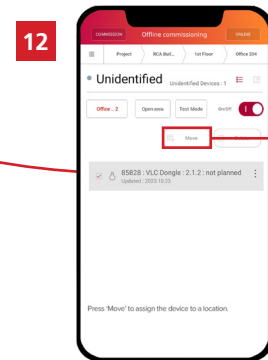
9 Tap stop to end the scan process when all are found.



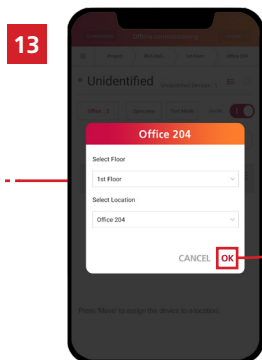
10 The details of the devices will change accordingly once commissioned.



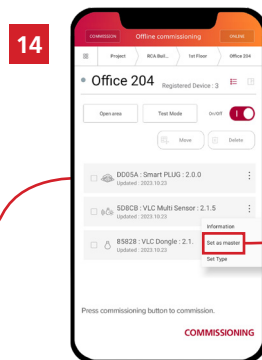
11 If a new device is found, it will be placed in the "unidentified" icon.



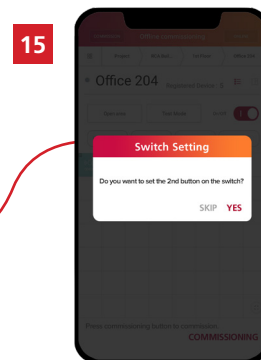
12 Tap on the Unidentified icon and select the device, then tap on "Move."



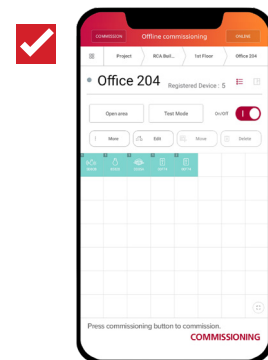
13 Select the location to move the device to.



14 Tap on the 3 dots to the RHS of a device to set the master.



15 Repeat the same process to add a switch. Ensure the switch is awake by pressing any of its buttons.



All devices are easily viewed, positioned and grouped in grid view. 2 group switches can be defined here. Refer to full manual for more information.



End of Basic Sensor Connect Setup

For further information regarding advanced features such as daylight harvesting, grouping, scheduling, scene selectors, etc. refer to the full Sensor Connect Manual at:

<https://www.rcalights.com/resources/>

